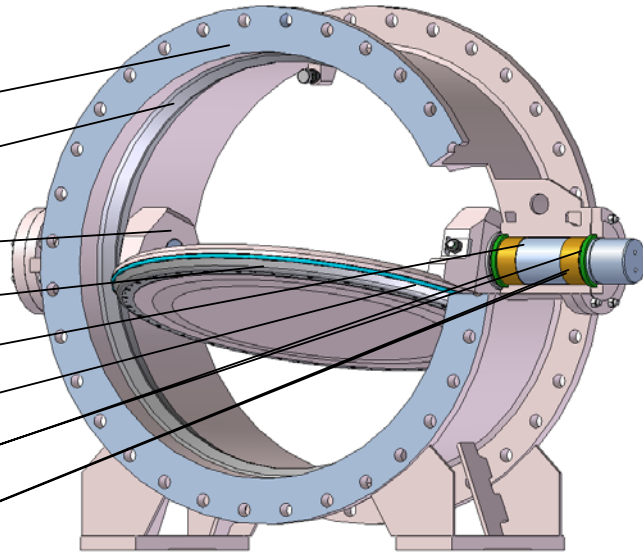


**Description:**

BTV- butterfly valves are of fabricated design with lens disc. Double eccentric positioning of the disc permits smooth raising and resetting of the disc-seal from/on the sealing surface. BTV valves have double sealing system on the shafts and special profile of the disc seal for positive, long term tightness. With standard seals materials BTV valves may be used in liquid and gaseous service for temperatures up to 150°C.

**Main materials:**

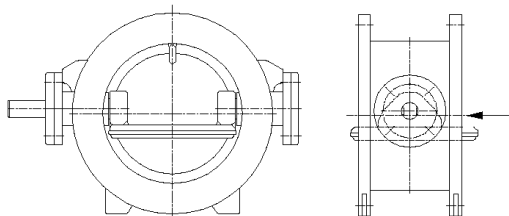
Parts	Type standard
body	carbon steel
seat ring	stainless steel
disc	carbon steel
clamping ring	carbon steel
shaft	stainless steel
main sealing	BUNA N (rubber)
seals	NOVOTHAN/ BUNA N (rubber)
bushings	slide bearings



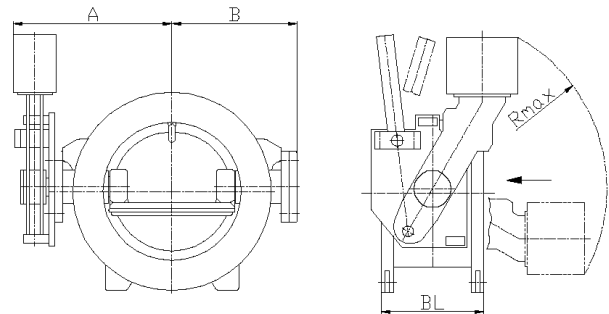
Other materials are available on request  
Painting for standard valves – epoxy coating

**General design:**

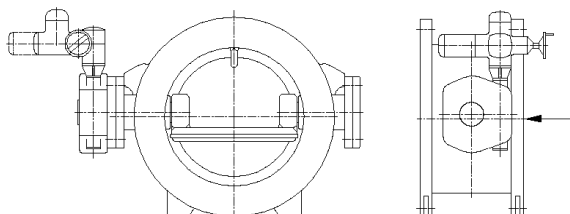
1. Bare shaft



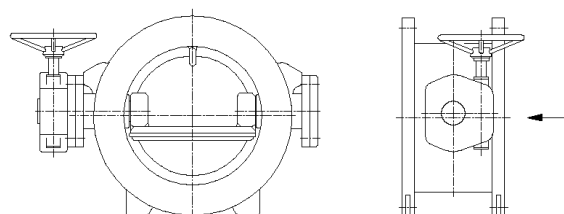
2. Counterweight and servomotor



3. Worm gear unit + Electric actuator



4. Worm gear unit + Handwheel





www.tfvalves.com

## Butterfly valve    Type BTV DN200(8")-3000(118") PN6-25

**Dimensions and weights for standard range of BTV butterfly valves** (other sizes and pressure ratings are available on request).

DN	BL	PN6					PN10					PN16					PN25				
		A	B	R max	Weight drive 2	Weight drive 3	A	B	R max	Weight drive 2	Weight drive 3	A	B	R max	Weight drive 2	Weight drive 3	A	B	R max	Weight drive 2	Weight drive 3
[mm]	[mm]	[mm]	[mm]	[mm]	[kg]	[kg]	[mm]	[mm]	[mm]	[kg]	[kg]	[mm]	[mm]	[mm]	[kg]	[kg]	[mm]	[mm]	[mm]	[kg]	[kg]
200	230	450	250	500	160	95	450	250	520	165	100	700	250	520	165	100	700	260	580	210	110
250	250	480	280	520	170	105	480	280	580	215	115	730	285	660	225	125	760	300	660	275	155
300	270	510	310	660	225	125	510	310	660	265	130	780	320	800	300	160	810	340	860	450	190
350	290	540	340	660	280	145	540	340	800	310	175	810	350	820	460	200	850	380	860	500	255
400	310	570	370	800	330	195	570	370	820	485	220	860	390	860	510	260	890	420	980	675	340
450	330	600	400	820	480	215	600	400	860	520	245	890	420	980	650	295	920	440	1200	750	400
500	350	620	420	860	520	265	620	420	980	645	290	930	450	1100	720	395	980	470	1400	1100	490
600	390	680	480	980	670	340	680	480	1100	740	400	1030	520	1200	890	560	1040	540	1550	1400	705
700	430	740	540	1100	800	470	740	540	1200	920	570	1070	570	1400	1270	735	1110	610	1200	1800	1000
800	470	810	610	1200	960	630	850	610	1400	1300	745	1140	640	1550	1550	940	1180	680	1650	3100	1280
900	510	910	670	1400	1390	830	910	670	1550	1650	1020	1200	700	1650	1970	1240	1280	750	1650	3500	1800
1000	550	970	730	1550	1700	1070	1050	730	1650	2100	1350	1260	760	1650	3460	1675	1340	810	1800	5300	2400
1200	630	1190	870	1650	2440	1650	1400	870	1650	3700	1900	1420	900	1650	4250	2550					
1400	710	1530	1000	1650	4260	2460	1550	1000	1650	4600	2820	1560	1040	1650	6430	3540					
1500	750	1620	1070	1650	4790	3080	1650	1070	1650	6500	3620	1700	1110	1800	7200	4480					
1600	790	1710	1130	1650	6270	3330	1710	1130	1880	7000	4180	1780	1180	2000	7800	5200					
1800	870	1850	1270	1800	7500	4600	1850	1270	2000	9500	5830										
2000	950	1980	1400	2000	8700	6180	1980	1400	2400	10200	7670										
2200	1030	2100	1520	2400	10400	7630															
2400	1110	2230	1650	2400	12000	9200															
2600	1190	2360	1780	2500	14000	11320															
2800	1270	2480	1900	2500	15500	12820															
3000	1350	2600	2000	2600	17500	15100															

Flange in accordance with ISO / DIN

Flanges in accordance with ANSI and MSS available on request

Dimensions and weights are preliminary only and are subject to change during detail design.