

Description:

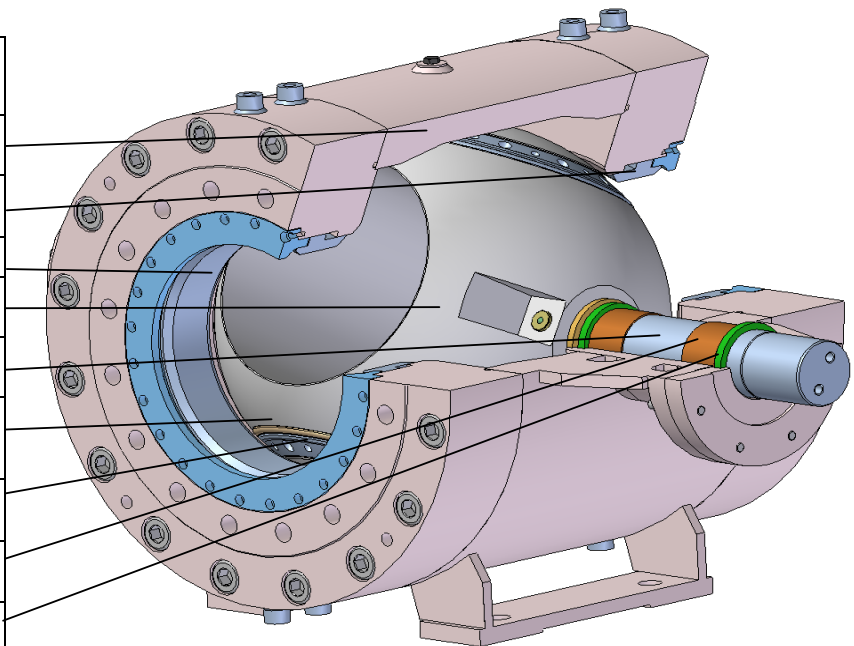
SPV-3P-M spherical valves are of heavy, forged design with 3 piece short, compact body with thread holes flange connections.

Valves are equipped with movable, water – hydraulic operated service and maintenance seals system (metal to metal/rubber). Maintenance works on service seal can be executed without dismantling the valve from the penstock.

SPV-3P-M valves have double seals (internal - external) on the shafts and special shape of the rotor seals for positive, long term tightness. With standard seals materials SPV-3P-M valves may be used in liquid and gaseous service for temperatures up to 70°C.

Main materials:

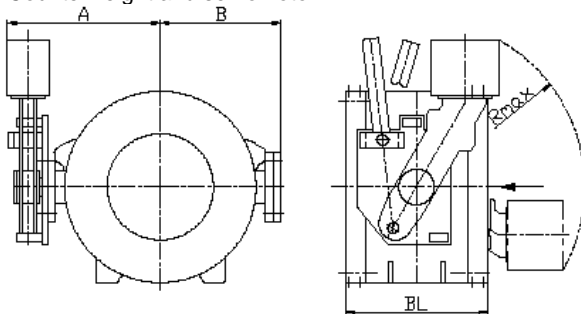
Parts	Type standard
Body	carbon steel
Maintenance seal	stainless steel
Seat ring	stainless steel
Rotor	carbon steel
Shaft	stainless steel
Main seal	Stainless steel / Buna N / polyurethane
Clamping ring	stainless steel
Bushings	sidle bushing
Seals	Novothan Buna N (rubber)



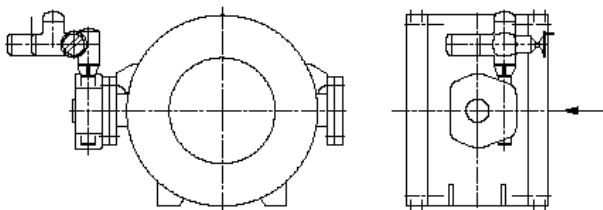
Other materials on request
Painting for standard valves- epoxy coating

Drives of valves:

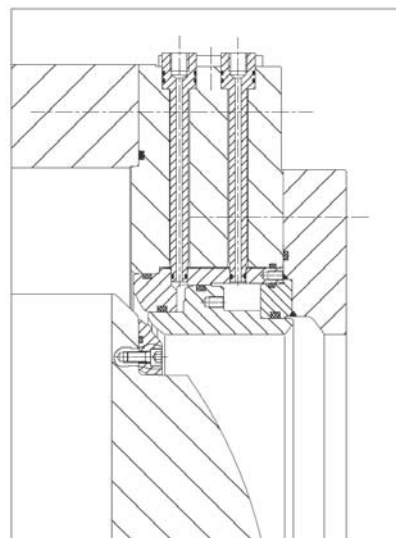
1. Counterweight and servomotor



2. Worm gear unit + Electric actuator



Cross section of the sealing system





www.tfvalves.com

Spherical valve Type SPV-3P-M DN150(6'')-1200(47'') PN25-160

Dimensions and weights for standard range of SPV-3P-M spherical valves (other sizes and pressure ratings are available upon request).

DN	BL	PN25					PN40					PN64					PN100					PN160					
		A	B	R max	Weight drive 1	Weight drive 2	A	B	R max	Weight drive 1	Weight drive 2	A	B	R max	Weight drive 1	Weight drive 2	A	B	R max	Weight drive 1	Weight drive 2	A	B	R max	Weight drive 1	Weight drive 2	
[mm]	[mm]	[mm]	[mm]	[mm]	[kg]	[kg]	[mm]	[mm]	[mm]	[kg]	[kg]	[mm]	[mm]	[mm]	[kg]	[kg]	[mm]	[mm]	[mm]	[kg]	[kg]	[mm]	[mm]	[mm]	[kg]	[kg]	
150	420	560	360	480	640	550	560	360	660	700	600	560	360	800	700	570	560	360	980	790	465						
200	490	620	420	580	1000	940	620	420	860	1200	900	620	420	800	1200	950	620	420	980	1065	770						
250	540	650	450	660	1200	1000	650	450	980	1300	1100	650	450	860	1300	1100	650	450	1100	1160	890						
300	570	680	510	860	1600	1300	680	510	1200	1700	1400	680	510	980	1700	1400	680	510	1550	1700	1055						
350	720	840	640	860	2700	2500	840	640	1400	3100	2500	840	640	980	3100	2600	840	640	1550	2890	2120						
400	770	900	700	980	3500	3100	900	700	1550	3800	3100	900	700	1100	3800	3200	900	700	1650	4360	2600						
450	810	970	770	1200	4000	3800	970	770	1550	4600	3800	970	770	1200	4600	4400	970	770	1650	4900	3240						
500	910	1085	845	1400	5000	4500	1085	845	1650	6300	4600	1085	845	1550	6300	6000	1085	845	1800	6700	3835						
600	1060	1140	900	1550	7200	6800	1140	900	1650	8650	6900	1140	900	1650	8600	8000	1140	900	1800	9000	6300						
700	1210	1185	985	1550	10200	9500	1185	985	1650	11300	9600	1185	985	1800	11400	11000	1185	985									
800	1380	1890	1090	1650	14700	13000	1890	1090	1800	15700	13100	1890	1090	2000	15700	15000	1890	1090									
900	1530	2075	1175	1650	19000	17600	2075	1175	2000	19200	17800	2075	1175	2200	19200	19000	2075	1175									
1200	1700	2150	1300	1700	23000	21500	2250	1430	1720	24000	22500																
1600																											

Flange in accordance with ISO / DIN.

Flanges in accordance with ANSI and MSS available on request.

Dimensions and weights are preliminary only. Final dimensions and weights will be established after detail design of each valve is completed.