



www.tfvalves.com

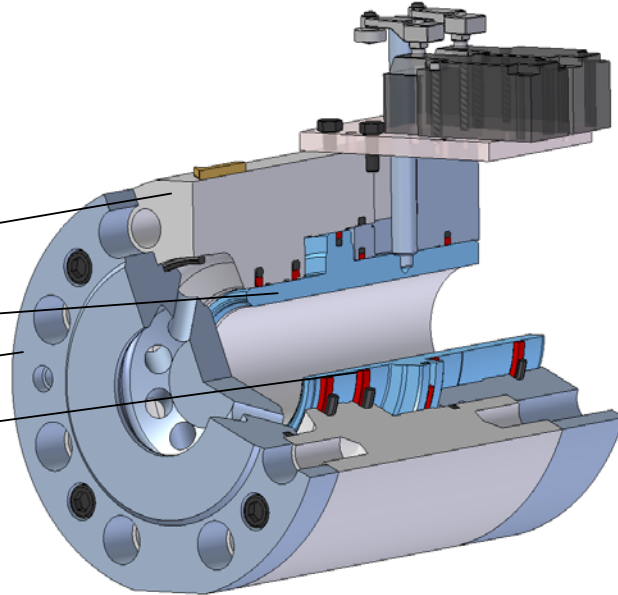
Slide valve Type SLV DN50(2")-300(12") PN16-150

Description:

SLV slide valves are of heavy, forged design. Slide valves have self-closing tendency and are open by the process medium or external hydraulic system. The piston moves axially in the direction of flow and perpendicularly to the sealing surface. SLV slide valves sealing system ensures absolutely tight seal in the main flow direction for liquids and for gases. SLV slide valves are used as shut-off devices in pressurized piping system. With standard seals materials SLV valves may be used in liquid and gaseous service for temperatures up to 150°C.

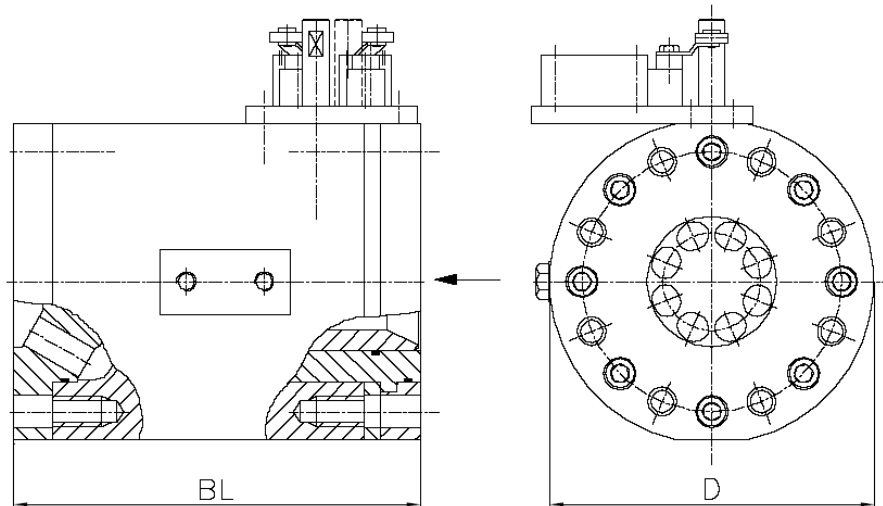
Main materials:

Parts	Type standard
Body	stainless steel
Piston	stainless steel
Outlet plate	stainless steel
Seals	XH-Ecopur / Buna N (rubber)



Other materials are available upon request

General design:





www.tfvalves.com

Slide valve Type SLV DN50(2'')-300(12'') PN16-150

Dimensions and weights for standard range of SLV slide valves (other sizes and pressure ratings are available upon request).

DN	BL	PN16		PN25		PN40		PN64		PN100		PN150	
		D	Weight	D	Weight	D	Weight	D	Weight	D	Weight	D	Weight
[mm]	[mm]	[mm]	[kG]	[mm]	[kG]	[mm]	[kG]	[mm]	[kG]	[mm]	[kG]	[mm]	[kG]
50	220	165	30	165	30	165	30	180	40	195	45	195	45
65	240	185	45	185	45	185	45	205	55	220	65	220	65
80	280	200	55	200	55	200	55	215	65	230	75	230	75
100	320	220	85	235	100	235	100	250	120	265	120	265	120
125	340	250	100	270	125	270	125	295	150	315	175	315	175
150	380	285	140	300	160	300	160	345	220	355	235	355	235
200	420	340	260	360	290	375	310	415	390	430	410	430	410
300	460	460	550	485	610	515	700	530	750	585	900	585	900

Flange in accordance with ISO / DIN

Flanges in accordance with ANSI and MSS available on request

Dimensions and weights are preliminary only. Final dimensions and weights will be established after detail design of each valve is completed.